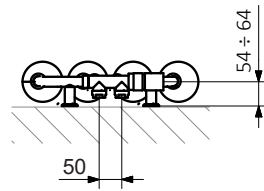
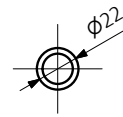


Cod. Modello Model	Altezza Height H mm	Larghezza width L mm	Interasse Distance betw. centers l mm	Cont. Acqua Water Cont. Lt	Peso Weight Kg	$\Delta t=50^{\circ}\text{C}$ Watt/el Kcal/h el	$\Delta t=30^{\circ}\text{C}$ Watt
Net/1920/390	1920	390	50	4,49	36.31	989	499
Net/1920/490	1920	490	50	5,66	45.36	1240	626

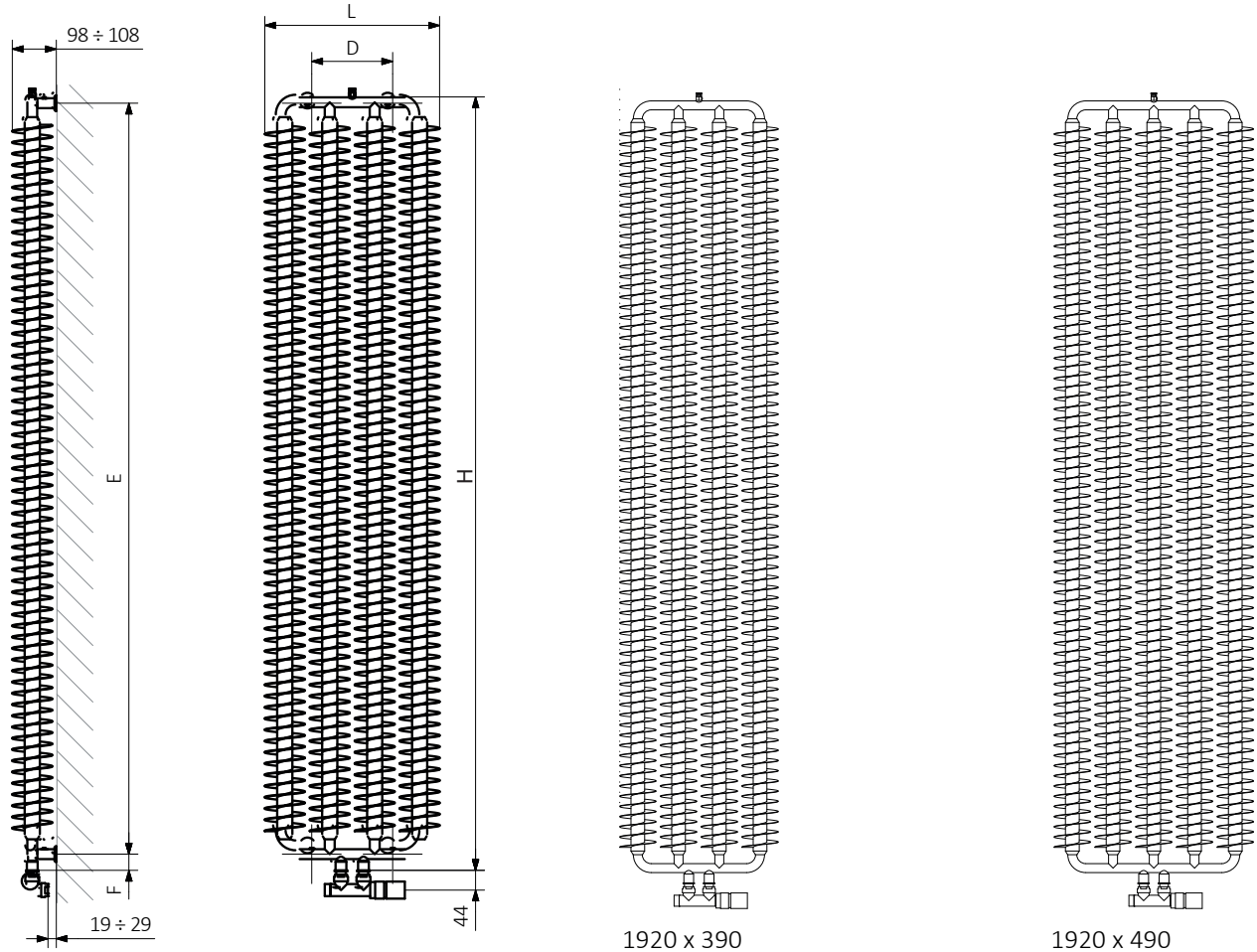
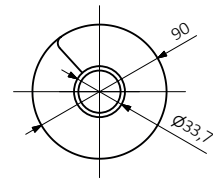
Connessione standard 50mm centrali
Standard connection 50mm



Colletto-Collector:



Profilo-Profile:



- H:Altezza-Height
- L:Larghezza massima-Max Width
- D:Distanza tra i fissaggi orizzontali-Horizontal distance between mounting bracket centers
- E:Distanza verticale tra i fissaggi-Vertical distance between mounting brackets
- F:Distanza tra i fissaggi e uscita tubi-Distance between mounting bracket and the bottom

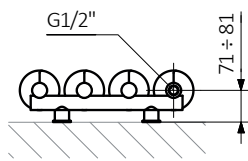
componenti inclusi-Included components:

Il radiatore è venduto con una valvola twin ad angolo termostattizzabile , una testa termostatica minimal adattatori per l'installazione alupex 16x2 (o rame a richiesta).Tutte le valvole sono nella finitura cromo.
The radiator is sold with an itegrated , angled thermostatic valve,SLIM thermostatic head and adapters for installation Alupex 16x2 (or copper on request). All the valve cpmponents are finished in chrome.

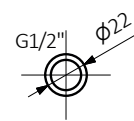
Net elettrico

Cod. Modello Model	Altezza Height H mm	Larghezza width L mm	w	Cont. Acqua Water Cont. Lt	Peso Weight Kg
Net/1800/390E	1800	390	800	4,45	36.16
Net/1800/490E	1800	490	1000	5,57	45.21

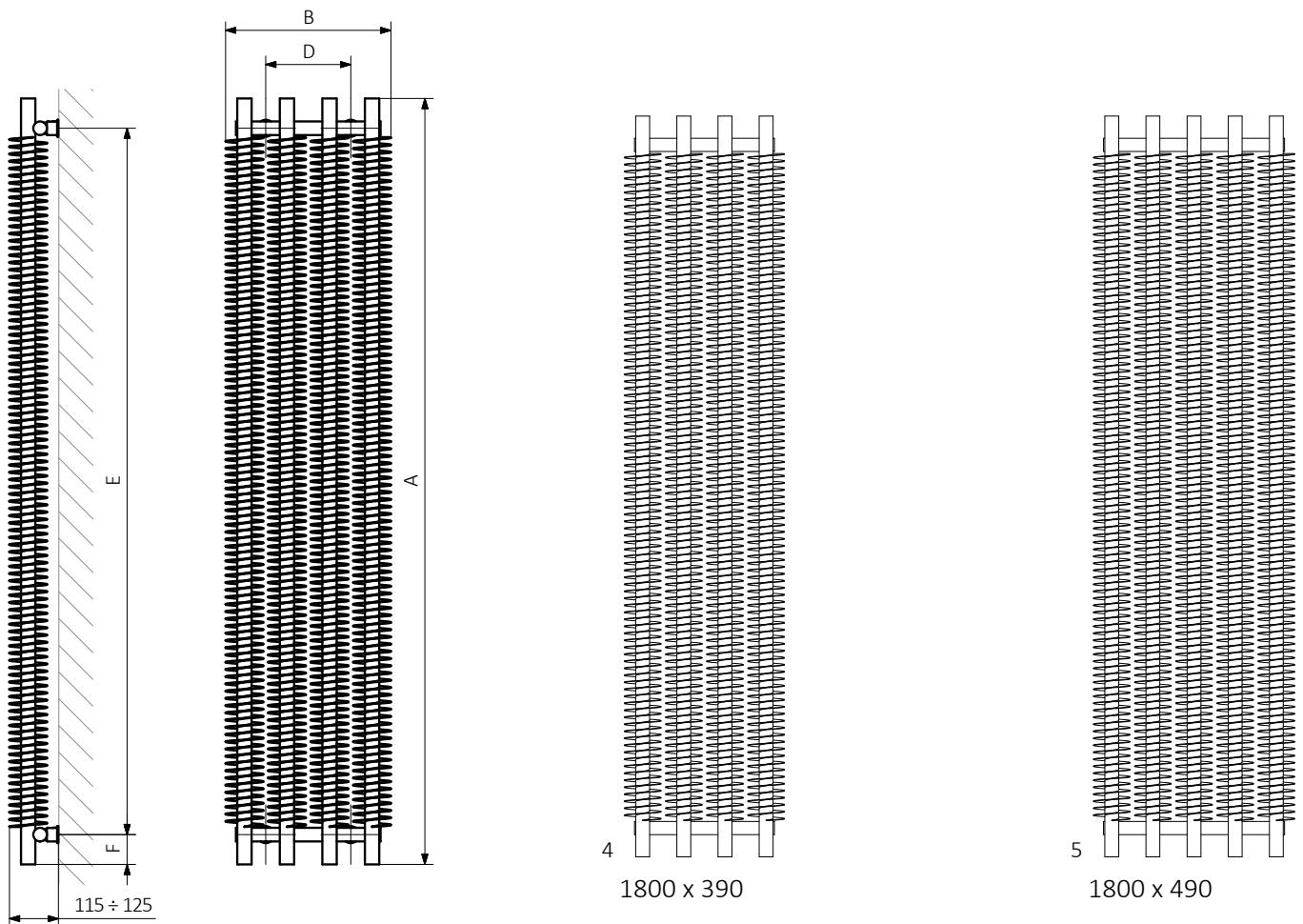
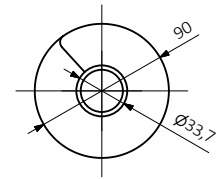
Uscita resistenza Out heating element



Colletto-Collector:



Profilo-Profile:



H:Altezza-Height

L:Larghezza massima-Max Width

D:Distanza tra i fissaggi orizzontali-Horizontal distance between mounting bracket centers

E:Distanza verticale tra i fissaggi-Vertical distance between mounting brackets

F:Distanza tra i fissaggi e uscite tubi-Distance between mounting bracket and the bottom

